



# LIVESTOCK PRODUCTS AUSTRALIA

EMBARGO: 11:30AM (CANBERRA TIME) TUES 13 NOV 2001

## SEPTEMBER QTR KEY FIGURES

TREND ESTIMATES	Sep Qtr 2000 '000	Jun Qtr 2001 '000	Sep Qtr 2001 '000
Number slaughtered			
Cattle	1 902.0	1 917.9	1 918.6
Calves	268.5	247.9	241.1
Sheep	4 158.5	4 057.8	4 048.1
Lambs	4 698.6	4 459.7	4 272.2
Pigs	1 247.1	1 279.1	1 299.7
Chickens	101 150.7	98 513.3	98 094.4

	Sep Qtr 2000 tonnes	Jun Qtr 2001 tonnes	Sep Qtr 2001 tonnes
Meat produced			
Beef	500 754	507 435	509 716
Veal	8 696	7 883	7 571
Mutton	87 670	83 897	83 782
Lamb	91 198	87 637	83 795
Pig meat	90 568	93 548	95 433
Chicken meat	155 040	155 741	157 545

Wool receivals	151 277	145 118	139 287
----------------	---------	---------	---------

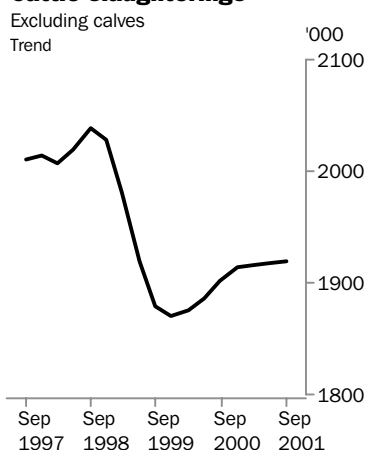
	Jun Qtr 2000 ML	Mar Qtr 2001 ML	Jun Qtr 2001 ML
Whole milk intake by factories	2 760	2 632	2 696

## SEPTEMBER QTR KEY POINTS

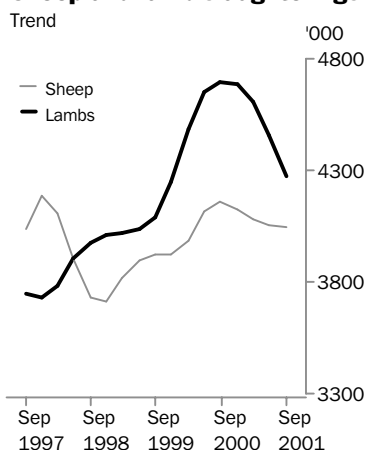
### TREND ESTIMATES

- The trend estimate for beef production increased to a record 510,000 tonnes in September quarter 2001. This was the eighth consecutive quarterly increase and the highest quarterly trend estimate on record.
- The trend estimate for the number of lambs slaughtered in September quarter 2001 fell by 4% to 4.3 million, the lowest quarterly estimate since December quarter 1999.
- The trend estimate for pig meat production in September quarter 2001 increased by 2% to a record 95,400 tonnes.

### Cattle slaughtering



### Sheep and lamb slaughtering



▪ For further information about these and related statistics, contact Gordon Cameron on Hobart 03 6222 5939, or the National Information and Referral Service on 1300 135 070.

# NOTES

## FORTHCOMING ISSUES

*ISSUE (Quarter)*

*RELEASE DATE*

December 2001

12 February 2002

March 2002

10 May 2002



## CHANGES IN THIS ISSUE

Figures for sheep and lambs slaughtered, and mutton and lamb produced have been revised downwards for the last four quarters, following some corrections to originally reported figures. For Australia, revisions range up to 3% in some quarters, while revisions for WA are higher. Contact the ABS for more detailed information.

## FORTHCOMING CHANGES

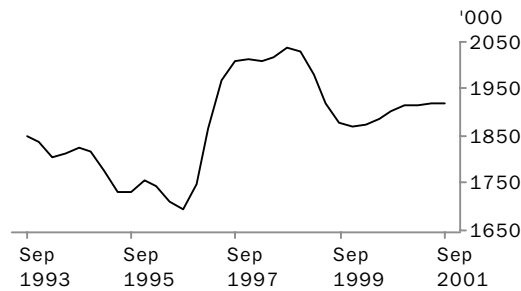
There are no forthcoming changes.



Dennis Trewin  
Australian Statistician

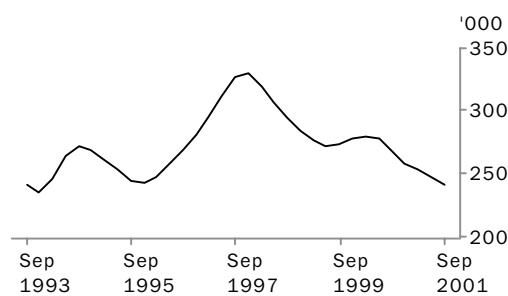
# LIVESTOCK SLAUGHTERED: Trend

CATTLE (EXCLUDING CALVES)



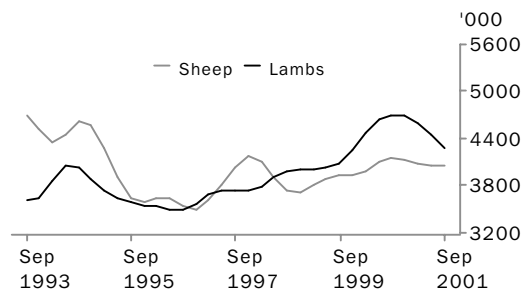
The trend estimate for the number of cattle slaughtered in September quarter 2001 was 1.9 million. Slaughter numbers remained steady in a strong market as a result of tightening supply.

CALVES



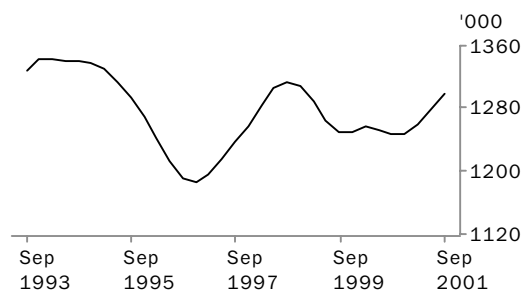
The trend estimate for the number of calves slaughtered in September quarter 2001 was 241,000, down by 3% on the June quarter 2001 estimate. This was the sixth consecutive quarterly decrease and the lowest quarterly trend estimate since December quarter 1993.

SHEEP AND LAMBS



The trend estimate for the number of sheep slaughtered in September quarter 2001 remained steady at 4.0 million. The trend estimate for the number of lambs slaughtered fell by 4% to 4.3 million as supplies remain tight after the high slaughter levels earlier in the year.

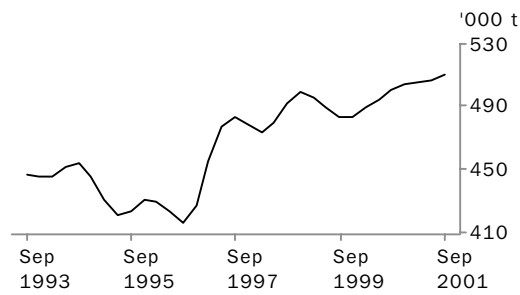
PIGS



Strong export performance, combined with import restrictions, saw the trend estimate for the number of pigs slaughtered in September quarter 2001 increase by 2% to 1.3 million, the highest quarterly figure since December quarter 1998.

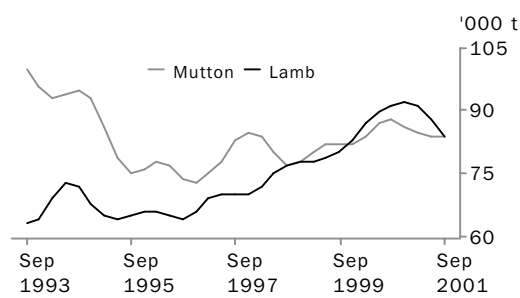
# MEAT PRODUCTION: Trend

## BEEF



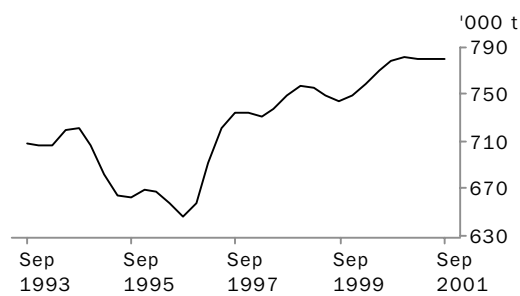
Beef production increased to 510,000 tonnes in September quarter 2001, continuing the strong performance of recent quarters. This was driven mainly by increases in beef exports which continued their high levels from the previous quarter.

## MUTTON AND LAMB



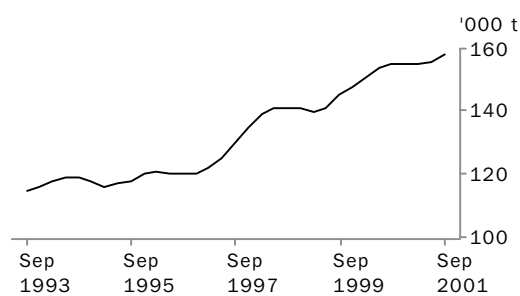
The trend estimate for mutton production fell slightly to 83,800 tonnes in September quarter 2001. The trend estimate for lamb production in September quarter fell by 4% to 83,800 tonnes. This was the lowest quarterly estimate since December quarter 1999.

## TOTAL RED MEAT



The trend estimate for total red meat production remained steady at 780,000 tonnes in September quarter 2001, with increases in beef and pig meat production being offset by a fall in lamb production.

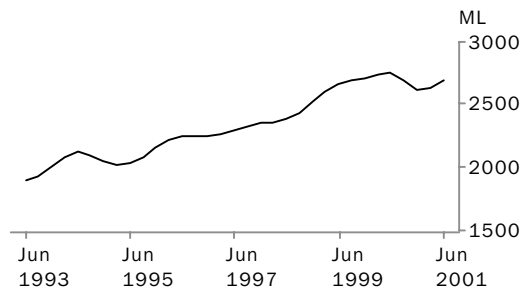
## CHICKEN MEAT



The trend estimate for chicken meat production in September quarter 2001 increased by 1% to a record 158,000 tonnes.

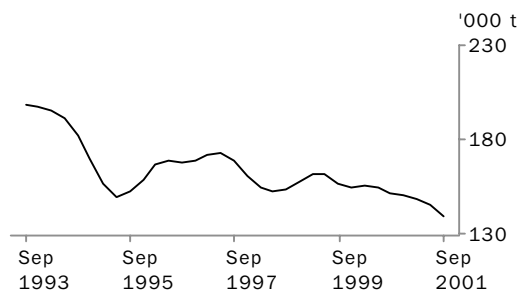
# LIVESTOCK PRODUCTS: Trend

WHOLE MILK INTAKE BY FACTORIES



In June quarter 2001, the trend estimate for whole milk intake by factories increased by 2% to 2.7 billion litres, recovering from the low reported in the previous quarter as a result of poor seasonal conditions.

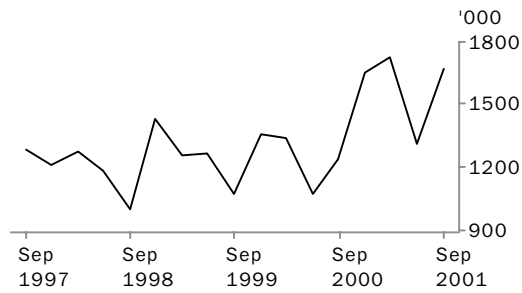
BROKERS AND DEALERS RECEIVALS OF TAXABLE WOOL



The trend estimate for wool receivals by brokers and dealers fell by 4% in September quarter 2001 to 139,000 tonnes. This was the sixth consecutive quarterly decrease.

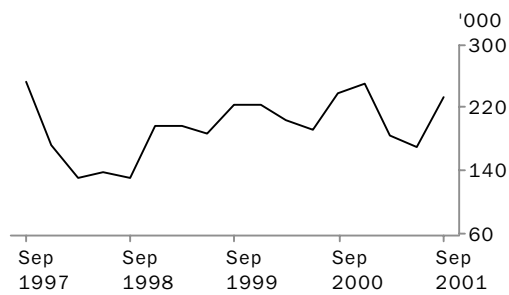
# LIVESTOCK EXPORTS: Original

## EXPORTS OF LIVE SHEEP



Live sheep exports increased by 27% in September quarter 2001 to 1.7 million and, combined with a 14% increase (to \$56.00) in unit value, pushed the gross value of live sheep exports up by 45% to \$93.5 million.

## EXPORTS OF LIVE CATTLE



Live cattle exports increased by 37% in September quarter 2001 to 234,000, with Asian markets, including Indonesia, improving. The gross value of live cattle exports increased by 37% to \$143 million, although the unit value was down slightly at \$613.15.

## LIVESTOCK SLAUGHTERED, Australia(a): All Series

Quarter	Bulls, bullocks and steers '000	Cows and heifers '000	Total cattle (excluding calves) '000	Calves '000	Sheep '000	Lambs '000	Pigs '000	Chickens '000
ORIGINAL								
<b>2000</b>								
June	947.4	1 001.0	1 948.3	255.9	3 657.8	4 725.9	1 307.5	99 820.3
September	1 010.6	930.9	1 941.5	522.9	3 830.7	4 721.9	1 238.0	100 165.6
December	1 009.5	872.1	1 881.6	168.0	4 294.4	4 738.5	1 239.6	102 953.7
<b>2001</b>								
March	951.8	890.0	1 841.9	119.7	4 605.0	4 570.6	1 217.9	99 139.6
June	1 011.4	980.7	1 992.1	226.9	3 793.5	4 470.8	1 317.3	96 609.7
September	1 060.3	889.3	1 949.7	459.7	3 460.4	4 086.9	1 310.7	97 100.9
SEASONALLY ADJUSTED								
<b>2000</b>								
June	959.2	919.5	1 878.8	283.7	4 063.2	4 879.8	1 256.8	101 502.4
September	987.1	925.3	1 912.4	266.4	4 356.3	4 627.4	1 231.6	101 605.4
December	987.8	930.8	1 918.6	249.8	3 983.0	4 566.3	1 256.4	100 380.0
<b>2001</b>								
March	984.8	918.1	1 902.9	258.4	4 032.2	4 695.6	1 260.5	99 019.9
June	1 024.6	902.5	1 927.1	252.0	4 214.1	4 619.1	1 266.1	98 317.8
September	1 034.8	884.0	1 918.8	233.9	3 927.4	3 997.2	1 314.4	98 373.8
TREND ESTIMATES								
<b>2000</b>								
June	965.6	919.7	1 885.3	277.8	4 111.6	4 652.4	1 252.9	100 884.6
September	974.2	927.8	1 902.0	268.5	4 158.5	4 698.6	1 247.1	101 150.7
December	986.6	926.8	1 913.4	258.1	4 128.8	4 688.5	1 246.8	100 537.4
<b>2001</b>								
March	998.9	917.3	1 916.1	253.2	4 084.3	4 605.7	1 260.2	99 278.8
June	1 015.4	902.5	1 917.9	247.9	4 057.8	4 459.7	1 279.1	98 513.3
September	1 031.2	887.4	1 918.6	241.1	4 048.1	4 272.2	1 299.7	98 094.4

(a) For more information refer to paragraphs 5 to 9 of the Explanatory Notes.

## LIVESTOCK PRODUCTS, Australia(a): All Series

## RED MEAT.....

Quarter	Beef	Veal	Mutton	Lamb	Pig meat	Total red meat	Chicken meat	Whole milk intake by factories	Brokers and dealers receipts of taxable wool
	tonnes	tonnes	tonnes	tonnes	tonnes	tonnes	tonnes	ML	tonnes
ORIGINAL									
<b>2000</b>									
June	505 010	8 610	75 062	95 435	95 985	780 103	152 123	1 883	137 032
September	510 074	13 429	82 735	94 018	90 708	790 965	152 454	2 610	169 850
December	502 390	6 545	92 709	92 647	89 541	783 832	161 639	3 594	174 391
<b>2001</b>									
March	485 963	5 743	93 669	90 351	87 319	763 045	150 536	2 443	138 105
June	522 483	7 755	76 344	88 014	97 315	791 911	154 777	1 902	109 435
September	516 649	11 656	71 973	80 216	98 367	778 861	155 971	n.a.	151 446
SEASONALLY ADJUSTED									
<b>2000</b>									
June	493 743	8 759	85 428	98 751	90 567	777 248	154 045	2 775	186 660
September	503 230	8 654	91 897	92 126	89 560	785 467	154 833	2 744	147 570
December	506 995	8 550	84 265	89 720	91 212	780 742	157 495	2 581	142 997
<b>2001</b>									
March	499 385	8 203	82 785	92 198	92 303	774 874	150 767	2 513	155 897
June	511 426	7 896	86 924	91 040	91 828	789 114	156 803	2 836	146 948
September	509 405	7 511	81 974	78 417	97 165	774 472	158 819	n.a.	132 286
TREND									
<b>2000</b>									
June	494 582	8 850	86 583	89 626	91 052	770 693	153 997	2 760	155 209
September	500 754	8 696	87 670	91 198	90 568	778 886	155 040	2 691	151 277
December	504 259	8 479	86 494	92 107	90 574	781 913	154 830	2 624	149 548
<b>2001</b>									
March	505 528	8 214	84 791	90 903	91 855	781 291	154 634	2 632	148 351
June	507 435	7 883	83 897	87 637	93 548	780 400	155 741	2 696	145 118
September	509 716	7 571	83 782	83 795	95 433	780 297	157 545	n.a.	139 287

(a) For more information refer to paragraphs 5 to 9 and 13 to 15 of the Explanatory Notes.



## NUMBER OF LIVESTOCK SLAUGHTERED(a), Bulls, Bullocks and Steers: All Series

	<i>New South Wales</i>	<i>Victoria</i>	<i>Queensland</i>	<i>South Australia</i>	<i>Western Australia</i>	<i>Tasmania</i>	<i>Australia</i>
<i>Quarter</i>	'000	'000	'000	'000	'000	'000	'000
ORIGINAL							
<b>2000</b>							
June	179.3	154.5	503.3	41.3	41.2	26.4	947.4
September	179.5	145.6	578.8	38.5	45.8	18.9	1 010.6
December	168.6	164.0	545.1	49.8	59.3	22.4	1 009.5
<b>2001</b>							
March	183.6	167.6	481.3	50.4	39.8	28.9	951.8
June	180.3	141.5	586.1	41.0	42.1	20.1	1 011.4
September	187.5	136.5	647.4	37.0	34.3	17.2	1 060.3
SEASONALLY ADJUSTED							
<b>2000</b>							
June	183.8	163.1	496.3	44.7	46.4	25.4	959.2
September	179.0	158.6	517.2	44.6	50.0	21.6	987.1
December	169.2	155.9	544.8	43.4	47.0	23.4	987.8
<b>2001</b>							
March	179.1	151.9	555.4	47.4	42.9	25.7	984.8
June	185.1	149.8	578.5	44.4	47.4	19.2	1 024.6
September	186.7	152.4	578.6	42.7	37.7	19.5	1 034.8
TREND ESTIMATES							
<b>2000</b>							
June	183.5	164.0	498.2	43.9	47.3	24.3	965.6
September	176.6	158.6	516.3	44.8	47.9	23.6	974.2
December	174.6	154.8	540.8	45.1	47.3	23.4	986.6
<b>2001</b>							
March	177.8	152.4	559.1	45.3	45.5	22.9	998.9
June	183.1	151.1	572.6	44.7	43.2	21.4	1 015.4
September	188.1	150.8	581.0	43.7	40.9	19.4	1 031.2

(a) For more information refer to paragraph 4 of the Explanatory Notes.

## NUMBER OF LIVESTOCK SLAUGHTERED(a), Cows and Heifers: All Series

	<i>New South Wales</i>	<i>Victoria</i>	<i>Queensland</i>	<i>South Australia</i>	<i>Western Australia</i>	<i>Tasmania</i>	<i>Australia</i>
<i>Quarter</i>	'000	'000	'000	'000	'000	'000	'000
ORIGINAL							
<b>2000</b>							
June	248.0	224.4	398.1	41.0	49.4	32.9	1 001.0
September	236.2	205.1	379.9	32.3	54.7	14.7	930.9
December	234.3	221.9	300.4	32.7	59.3	22.4	872.1
<b>2001</b>							
March	247.6	234.2	283.1	37.5	58.8	27.7	890.0
June	266.6	212.9	380.6	34.5	55.6	29.4	980.7
September	210.2	189.2	374.6	35.2	64.6	14.6	889.3
SEASONALLY ADJUSTED							
<b>2000</b>							
June	233.9	222.2	341.9	38.2	54.3	26.7	919.5
September	239.3	220.3	350.6	34.3	56.6	19.6	925.3
December	248.4	216.5	347.2	34.9	55.0	24.2	930.8
<b>2001</b>							
March	243.8	226.3	318.9	35.7	56.5	25.4	918.1
June	252.0	211.3	327.1	32.2	60.6	23.9	902.5
September	216.6	202.9	346.7	37.4	66.7	19.4	884.0
TREND ESTIMATES							
<b>2000</b>							
June	236.2	214.9	349.8	36.4	53.5	26.2	919.7
September	239.9	220.9	347.7	36.1	55.1	25.3	927.8
December	246.2	222.2	338.1	34.7	55.8	25.0	926.8
<b>2001</b>							
March	246.9	218.7	331.0	34.4	57.5	24.4	917.3
June	240.0	213.2	330.4	34.8	61.0	23.0	902.5
September	228.9	206.6	336.2	35.4	64.6	21.1	887.4

(a) For more information refer to paragraph 4 of the Explanatory Notes.

## NUMBER OF LIVESTOCK SLAUGHTERED(a), Total Cattle (excluding Calves): All Series

	<i>New South Wales</i>	<i>Victoria</i>	<i>Queensland</i>	<i>South Australia</i>	<i>Western Australia</i>	<i>Tasmania</i>	<i>Australia</i>
<i>Quarter</i>	'000	'000	'000	'000	'000	'000	'000
ORIGINAL							
<b>2000</b>							
June	427.3	378.9	901.4	82.3	90.6	59.4	<b>1 948.3</b>
September	415.7	350.7	958.6	70.8	100.5	33.6	<b>1 941.5</b>
December	403.0	385.9	845.5	82.6	118.6	44.7	<b>1 881.6</b>
<b>2001</b>							
March	431.2	401.8	764.4	87.9	98.6	56.6	<b>1 841.9</b>
June	446.9	354.4	966.7	75.5	97.7	49.5	<b>1 992.1</b>
September	397.7	325.7	1 022.0	72.2	98.9	31.8	<b>1 949.7</b>
SEASONALLY ADJUSTED							
<b>2000</b>							
June	417.6	385.3	838.2	82.9	100.7	52.1	<b>1 878.8</b>
September	418.3	378.9	867.8	78.9	106.6	41.2	<b>1 912.4</b>
December	417.6	372.4	892.0	78.3	102.0	47.5	<b>1 918.6</b>
<b>2001</b>							
March	423.0	378.1	874.3	83.0	99.4	51.1	<b>1 902.9</b>
June	437.1	361.0	905.6	76.7	108.0	43.1	<b>1 927.1</b>
September	403.3	355.3	925.3	80.1	104.4	39.0	<b>1 918.8</b>
TREND ESTIMATES							
<b>2000</b>							
June	419.7	378.9	848.0	80.3	100.8	50.4	<b>1 885.3</b>
September	416.5	379.6	864.0	80.9	103.0	48.9	<b>1 902.0</b>
December	420.8	377.0	878.9	79.8	103.1	48.4	<b>1 913.4</b>
<b>2001</b>							
March	424.7	371.1	890.1	79.6	103.0	47.3	<b>1 916.1</b>
June	423.0	364.3	903.0	79.5	104.1	44.4	<b>1 917.9</b>
September	416.9	357.4	917.2	79.1	105.5	40.5	<b>1 918.6</b>

(a) For more information refer to paragraph 4 of the Explanatory Notes.

## NUMBER OF LIVESTOCK SLAUGHTERED(a), Calves: All Series

	<i>New South Wales</i>	<i>Victoria</i>	<i>Queensland</i>	<i>South Australia</i>	<i>Western Australia</i>	<i>Tasmania</i>	<i>Australia</i>
<i>Quarter</i>	'000	'000	'000	'000	'000	'000	'000
ORIGINAL							
<b>2000</b>							
June	55.2	150.5	39.1	4.6	2.4	4.0	255.9
September	54.5	384.4	38.5	4.4	1.6	39.4	522.9
December	51.3	71.4	35.0	2.0	1.4	6.7	168.0
<b>2001</b>							
March	60.1	25.1	29.6	2.6	1.2	0.8	119.7
June	60.1	127.9	32.0	2.5	1.4	2.8	226.9
September	45.6	347.3	26.2	2.9	1.8	35.8	459.7
SEASONALLY ADJUSTED							
<b>2000</b>							
June	51.1	171.5	37.1	4.0	2.4	13.7	283.7
September	54.5	158.6	37.5	3.5	1.6	12.9	266.4
December	56.2	135.3	36.6	2.9	1.3	11.4	249.8
<b>2001</b>							
March	59.7	146.3	30.7	3.0	1.2	12.5	258.4
June	55.6	145.9	30.4	2.2	1.4	9.9	252.0
September	45.8	143.1	25.6	2.3	1.9	11.7	233.9
TREND ESTIMATES							
<b>2000</b>							
June	53.4	170.7	37.9	3.8	2.4	14.7	277.8
September	54.4	157.8	37.4	3.5	1.8	13.1	268.5
December	57.0	144.6	35.4	3.1	1.3	11.8	258.1
<b>2001</b>							
March	57.3	142.7	32.4	2.7	1.3	11.4	253.2
June	54.1	143.9	29.2	2.4	1.5	11.1	247.9
September	49.5	145.5	26.1	2.2	1.7	11.0	241.1

(a) For more information refer to paragraph 4 of the Explanatory Notes.

## NUMBER OF LIVESTOCK SLAUGHTERED(a), Sheep: All Series

	<i>New South Wales</i>	<i>Victoria</i>	<i>Queensland</i>	<i>South Australia</i>	<i>Western Australia</i>	<i>Tasmania</i>	<i>Australia</i>
<i>Quarter</i>	'000	'000	'000	'000	'000	'000	'000
ORIGINAL							
<b>2000</b>							
June	1 311.8	903.6	318.5	247.3	723.9	152.8	3 657.8
September	1 374.5	865.5	381.1	314.7	835.3	59.6	3 830.7
December	1 389.7	999.9	355.3	377.3	1 092.2	80.1	4 294.4
<b>2001</b>							
March	1 626.5	1 207.4	367.3	419.6	840.5	143.7	4 605.0
June	1 466.8	1 017.0	384.7	376.6	467.0	81.4	3 793.5
September	1 443.5	822.0	328.3	268.7	549.4	48.5	3 460.4
SEASONALLY ADJUSTED							
<b>2000</b>							
June	1 383.9	1 020.7	348.2	286.2	864.0	156.8	4 063.2
September	1 453.3	1 052.6	361.7	426.5	974.6	102.9	4 356.3
December	1 349.4	886.9	361.5	324.8	944.1	77.1	3 983.0
<b>2001</b>							
March	1 511.4	1 039.2	350.4	340.4	729.1	101.7	4 032.2
June	1 548.5	1 141.7	420.4	432.4	562.5	84.1	4 214.1
September	1 521.0	997.6	310.8	364.0	640.8	83.6	3 927.4
TREND ESTIMATES							
<b>2000</b>							
June	1 368.1	1 013.7	346.8	331.1	928.9	135.2	4 111.6
September	1 401.4	1 040.5	354.0	349.8	948.8	112.0	4 158.5
December	1 433.1	1 058.2	365.2	362.2	881.8	92.8	4 128.8
<b>2001</b>							
March	1 476.1	1 070.0	372.3	368.8	755.5	87.2	4 084.3
June	1 521.7	1 069.1	367.9	379.4	638.2	87.8	4 057.8
September	1 557.7	1 054.0	352.5	397.0	568.9	86.2	4 048.1

(a) For more information refer to paragraph 4 of the Explanatory Notes.

## NUMBER OF LIVESTOCK SLAUGHTERED(a), Lambs: All Series

	<i>New South Wales</i>	<i>Victoria</i>	<i>Queensland</i>	<i>South Australia</i>	<i>Western Australia</i>	<i>Tasmania</i>	<i>Australia</i>
<i>Quarter</i>	'000	'000	'000	'000	'000	'000	'000
ORIGINAL							
<b>2000</b>							
June	1 104.0	1 825.6	245.5	832.7	604.3	113.9	4 725.9
September	1 159.0	1 949.0	273.5	737.7	489.4	113.2	4 721.9
December	989.4	2 133.2	234.9	727.7	549.3	104.0	4 738.5
<b>2001</b>							
March	1 010.3	2 002.7	249.9	680.8	524.0	103.1	4 570.6
June	1 044.5	1 880.8	263.5	728.9	457.3	95.9	4 470.8
September	1 083.6	1 641.3	257.6	567.9	418.5	118.0	4 086.9
SEASONALLY ADJUSTED							
<b>2000</b>							
June	1 106.4	1 943.1	250.3	774.4	607.2	101.6	4 879.8
September	1 089.3	1 952.6	251.6	766.3	496.1	134.3	4 627.4
December	994.3	1 978.2	250.1	736.0	489.9	113.6	4 566.3
<b>2001</b>							
March	1 072.2	2 033.2	251.6	700.9	583.3	92.0	4 695.6
June	1 045.4	2 006.4	268.6	675.9	460.0	85.7	4 619.1
September	1 018.3	1 642.6	237.0	587.8	425.6	139.7	3 997.2
TREND ESTIMATES							
<b>2000</b>							
June	1 059.3	1 894.4	248.5	744.2	571.2	118.7	4 652.4
September	1 067.2	1 962.6	251.1	767.0	536.5	119.8	4 698.6
December	1 054.3	2 017.8	253.4	745.6	520.9	108.8	4 688.5
<b>2001</b>							
March	1 040.6	1 999.5	255.5	702.9	512.8	99.9	4 605.7
June	1 040.1	1 911.6	254.3	657.6	486.5	102.3	4 459.7
September	1 036.6	1 789.8	249.6	614.6	446.9	116.2	4 272.2

(a) For more information refer to paragraph 4 of the Explanatory Notes.

## NUMBER OF LIVESTOCK SLAUGHTERED(a), Pigs: All Series

	<i>New South Wales</i>	<i>Victoria</i>	<i>Queensland</i>	<i>South Australia</i>	<i>Western Australia</i>	<i>Tasmania</i>	<i>Australia</i>
<i>Quarter</i>	'000	'000	'000	'000	'000	'000	'000
ORIGINAL							
<b>2000</b>							
June	386.7	344.0	294.0	127.7	136.4	17.3	1 307.5
September	429.2	277.3	268.0	118.4	128.7	14.6	1 238.0
December	416.7	261.5	295.4	119.9	131.0	13.5	1 239.6
<b>2001</b>							
March	429.6	258.8	239.9	139.9	134.4	13.7	1 217.9
June	464.1	268.1	271.6	147.6	148.5	15.8	1 317.3
September	474.0	267.1	266.6	145.4	142.3	13.7	1 310.7
SEASONALLY ADJUSTED							
<b>2000</b>							
June	382.6	327.4	280.7	119.7	128.9	15.9	1 256.8
September	421.4	277.9	271.2	123.9	126.4	14.3	1 231.6
December	415.9	267.0	297.2	126.3	140.1	14.2	1 256.4
<b>2001</b>							
March	443.7	268.9	247.9	137.8	135.0	14.5	1 260.5
June	460.0	255.1	258.9	138.3	140.1	14.5	1 266.1
September	470.8	268.1	270.3	149.0	142.7	13.6	1 314.4
TREND ESTIMATES							
<b>2000</b>							
June	386.9	326.2	281.6	119.0	128.8	15.7	1 252.9
September	409.0	290.1	281.4	123.3	130.7	14.8	1 247.1
December	426.2	267.3	274.3	128.6	134.3	14.3	1 246.8
<b>2001</b>							
March	441.6	262.9	265.8	134.7	137.7	14.3	1 260.2
June	457.3	262.5	260.8	141.1	140.0	14.2	1 279.1
September	472.4	262.8	259.7	147.0	141.5	14.0	1 299.7

(a) For more information refer to paragraph 4 of the Explanatory Notes.

## NUMBER OF CHICKENS SLAUGHTERED(a): All Series

	<i>New South Wales</i>	<i>Victoria</i>	<i>Queensland</i>	<i>South Australia</i>	<i>Western Australia</i>	<i>Australia</i>
<i>Quarter</i>	'000	'000	'000	'000	'000	'000
ORIGINAL						
<b>2000</b>						
June	36 470.6	26 782.1	17 066.3	n.p.	n.p.	<b>99 820.3</b>
September	37 486.4	26 285.8	16 913.0	n.p.	n.p.	<b>100 165.6</b>
December	38 587.5	26 591.2	17 855.6	n.p.	n.p.	<b>102 953.7</b>
<b>2001</b>						
March	37 889.6	26 067.6	16 975.5	n.p.	n.p.	<b>99 139.6</b>
June	37 723.3	25 135.4	16 257.9	n.p.	n.p.	<b>96 609.7</b>
September	37 619.6	24 681.4	16 357.6	n.p.	n.p.	<b>97 100.9</b>
SEASONALLY ADJUSTED						
<b>2000</b>						
June	37 174.7	27 082.3	17 399.7	n.p.	n.p.	<b>101 502.4</b>
September	37 585.3	26 966.0	17 369.0	n.p.	n.p.	<b>101 605.4</b>
December	38 099.1	25 818.7	17 151.4	n.p.	n.p.	<b>100 380.0</b>
<b>2001</b>						
March	37 781.6	26 075.4	16 898.3	n.p.	n.p.	<b>99 019.9</b>
June	38 479.0	25 441.9	16 579.0	n.p.	n.p.	<b>98 317.8</b>
September	37 681.3	25 251.5	16 816.9	n.p.	n.p.	<b>98 373.8</b>
TREND ESTIMATES						
<b>2000</b>						
June	36 904.8	26 859.1	17 357.3	n.p.	n.p.	<b>100 884.6</b>
September	37 575.7	26 676.4	17 307.7	n.p.	n.p.	<b>101 150.7</b>
December	38 018.2	26 288.8	17 144.5	n.p.	n.p.	<b>100 537.4</b>
<b>2001</b>						
March	38 068.9	25 831.2	16 894.8	n.p.	n.p.	<b>99 278.8</b>
June	38 066.9	25 524.7	16 738.7	n.p.	n.p.	<b>98 513.3</b>
September	37 959.5	25 310.0	16 672.3	n.p.	n.p.	<b>98 094.4</b>

(a) For more information refer to paragraphs 8 and 9 of the Explanatory Notes.



## NUMBER OF LIVESTOCK SLAUGHTERED(a): Original

Financial year	New South Wales '000	Victoria '000	Queensland '000	South Australia '000	Western Australia '000	Tasmania '000	Australia '000
<b>BULLS, BULLOCKS AND STEERS</b>							
<b>1998-1999</b>	780.9	852.1	1 808.0	123.1	197.9	94.8	<b>3 871.1</b>
<b>1999-2000</b>	755.4	710.0	1 958.2	169.5	181.5	109.0	<b>3 892.7</b>
<b>2000-2001</b>	712.1	618.7	2 191.3	179.7	187.0	90.2	<b>3 983.4</b>
<b>COWS AND HEIFERS</b>							
<b>1998-1999</b>	1 113.6	899.2	1 499.1	154.7	240.8	116.3	<b>4 068.0</b>
<b>1999-2000</b>	969.4	813.8	1 354.2	145.2	212.4	108.9	<b>3 627.3</b>
<b>2000-2001</b>	984.7	874.0	1 344.0	137.0	228.4	94.2	<b>3 673.7</b>
<b>TOTAL CATTLE (excluding calves)</b>							
<b>1998-1999</b>	1 894.5	1 751.3	3 307.0	277.8	438.7	211.1	<b>7 939.1</b>
<b>1999-2000</b>	1 724.8	1 523.8	3 312.5	314.7	393.9	217.9	<b>7 520.0</b>
<b>2000-2001</b>	1 696.8	1 492.8	3 535.2	316.7	415.4	184.4	<b>7 657.1</b>
<b>CALVES</b>							
<b>1998-1999</b>	242.6	714.4	112.3	19.9	6.4	61.0	<b>1 157.4</b>
<b>1999-2000</b>	211.0	678.5	141.7	17.6	10.5	62.1	<b>1 122.1</b>
<b>2000-2001</b>	226.0	608.9	135.0	11.6	5.6	49.7	<b>1 037.5</b>
<b>SHEEP</b>							
<b>1998-1999</b>	5 583.2	3 079.6	1 333.8	2 018.3	2 672.2	439.9	<b>15 127.0</b>
<b>1999-2000</b>	5 385.6	3 816.0	1 423.9	1 223.8	3 418.1	589.9	<b>15 857.2</b>
<b>2000-2001</b>	5 857.4	4 089.8	1 488.4	1 488.2	3 235.0	364.7	<b>16 523.6</b>
<b>LAMBS</b>							
<b>1998-1999</b>	3 913.2	6 699.4	756.5	2 153.5	2 076.4	480.1	<b>16 079.2</b>
<b>1999-2000</b>	4 059.0	7 144.5	917.6	2 634.7	2 345.0	456.3	<b>17 557.1</b>
<b>2000-2001</b>	4 203.2	7 965.7	1 021.7	2 875.1	2 020.0	416.1	<b>18 501.8</b>
<b>PIGS</b>							
<b>1998-1999</b>	1 347.1	1 572.8	1 132.4	465.8	568.7	81.2	<b>5 176.3</b>
<b>1999-2000</b>	1 408.2	1 443.7	1 111.2	469.2	513.9	70.1	<b>5 024.7</b>
<b>2000-2001</b>	1 739.5	1 065.6	1 074.9	525.7	542.6	57.6	<b>5 012.8</b>
<b>CHICKENS</b>							
<b>1998-1999</b>	140 794.0	95 543.3	65 989.7	n.p.	n.p.	n.p.	<b>374 979.5</b>
<b>1999-2000</b>	139 966.7	105 889.3	68 922.0	n.p.	n.p.	n.p.	<b>393 991.8</b>
<b>2000-2001</b>	151 686.8	104 080.0	68 002.0	n.p.	n.p.	n.p.	<b>398 868.6</b>

(a) For more information refer to paragraphs 4, 5 and 7 to 9 of the Explanatory Notes.

## RED MEAT PRODUCED(a), Beef: All Series

	<i>New South Wales</i>	<i>Victoria</i>	<i>Queensland</i>	<i>South Australia</i>	<i>Western Australia</i>	<i>Tasmania</i>	<i>Australia</i>
<i>Quarter</i>	<i>tonnes</i>	<i>tonnes</i>	<i>tonnes</i>	<i>tonnes</i>	<i>tonnes</i>	<i>tonnes</i>	<i>tonnes</i>
ORIGINAL							
<b>2000</b>							
June	107 400	86 332	251 995	20 750	21 478	15 301	505 010
September	105 596	81 363	269 611	18 011	24 059	8 993	510 074
December	104 186	91 274	242 864	21 982	29 510	12 289	502 390
<b>2001</b>							
March	109 751	94 037	219 924	23 367	23 555	15 040	485 963
June	112 365	81 246	273 564	19 172	23 401	12 450	522 483
September	101 621	77 767	286 804	18 271	23 233	8 662	516 649
SEASONALLY ADJUSTED							
<b>2000</b>							
June	106 494	89 206	237 029	21 155	24 754	13 462	493 743
September	107 335	89 426	243 875	20 672	25 833	11 575	503 230
December	105 802	87 622	256 468	20 299	24 575	12 596	506 995
<b>2001</b>							
March	107 193	86 903	248 551	21 912	23 687	13 549	499 385
June	111 599	84 202	257 542	19 619	26 813	10 938	511 426
September	103 230	85 464	259 624	20 918	25 056	11 124	509 405
TREND ESTIMATES							
<b>2000</b>							
June	107 468	88 488	238 896	20 547	24 530	12 984	494 582
September	106 404	88 915	244 818	21 046	24 943	12 596	500 754
December	107 001	88 027	250 564	20 847	24 892	12 514	504 259
<b>2001</b>							
March	107 921	86 410	253 648	20 759	24 907	12 395	505 528
June	107 769	85 311	256 081	20 653	25 301	11 832	507 435
September	106 704	84 842	258 367	20 545	25 733	11 059	509 716

(a) For more information refer to paragraphs 4 to 6 of the Explanatory Notes.

## RED MEAT PRODUCED(a), Veal: All Series

	<i>New South Wales</i>	<i>Victoria</i>	<i>Queensland</i>	<i>South Australia</i>	<i>Western Australia</i>	<i>Tasmania</i>	<i>Australia</i>
<i>Quarter</i>	<i>tonnes</i>	<i>tonnes</i>	<i>tonnes</i>	<i>tonnes</i>	<i>tonnes</i>	<i>tonnes</i>	<i>tonnes</i>
ORIGINAL							
<b>2000</b>							
June	3 514	2 899	1 783	121	191	89	8 610
September	3 447	7 441	1 537	112	116	764	13 429
December	3 240	1 403	1 593	58	98	141	6 545
<b>2001</b>							
March	3 728	536	1 290	70	82	26	5 743
June	3 799	2 462	1 263	67	86	65	7 755
September	2 839	6 644	1 264	75	118	704	11 656
SEASONALLY ADJUSTED							
<b>2000</b>							
June	3 169	3 348	1 686	107	202	282	8 759
September	3 507	3 130	1 591	93	113	256	8 654
December	3 574	2 552	1 675	77	93	232	8 550
<b>2001</b>							
March	3 725	2 595	1 259	75	84	266	8 203
June	3 421	2 843	1 191	60	90	210	7 896
September	2 899	2 788	1 311	62	115	235	7 511
TREND ESTIMATES							
<b>2000</b>							
June	3 353	3 321	1 716	103	193	291	8 850
September	3 453	3 046	1 657	93	133	264	8 696
December	3 613	2 724	1 516	81	92	243	8 479
<b>2001</b>							
March	3 591	2 655	1 367	71	86	239	8 214
June	3 368	2 722	1 257	65	95	233	7 883
September	3 082	2 819	1 202	61	106	228	7 571

(a) For more information refer to paragraphs 4 to 6 of the Explanatory Notes.

## RED MEAT PRODUCED(a), Mutton: All Series

	<i>New South Wales</i>	<i>Victoria</i>	<i>Queensland</i>	<i>South Australia</i>	<i>Western Australia</i>	<i>Tasmania</i>	<i>Australia</i>
<i>Quarter</i>	<i>tonnes</i>	<i>tonnes</i>	<i>tonnes</i>	<i>tonnes</i>	<i>tonnes</i>	<i>tonnes</i>	<i>tonnes</i>
ORIGINAL							
<b>2000</b>							
June	27 948	17 699	6 043	5 792	14 569	3 013	75 062
September	30 823	18 336	7 427	8 072	16 932	1 146	82 735
December	31 247	21 172	6 801	9 826	22 052	1 610	92 709
<b>2001</b>							
March	34 102	23 127	7 073	9 885	16 610	2 873	93 669
June	30 663	19 331	7 085	8 321	9 341	1 603	76 344
September	31 491	16 262	5 823	6 290	11 154	952	71 973
SEASONALLY ADJUSTED							
<b>2000</b>							
June	30 358	20 644	6 808	7 168	17 767	2 862	85 428
September	32 043	21 783	6 980	10 654	19 561	2 086	91 897
December	29 641	18 307	6 775	8 164	18 834	1 586	84 265
<b>2001</b>							
March	32 099	20 269	6 778	8 045	14 469	2 073	82 785
June	33 313	22 403	7 970	10 257	11 498	1 529	86 924
September	32 594	19 259	5 459	8 281	12 877	1 733	81 974
TREND ESTIMATES							
<b>2000</b>							
June	30 245	20 405	6 748	8 177	18 883	2 616	86 583
September	30 790	20 359	6 797	8 765	19 117	2 192	87 670
December	31 180	20 173	6 995	8 978	17 628	1 861	86 494
<b>2001</b>							
March	31 790	20 334	7 079	8 883	15 089	1 744	84 791
June	32 579	20 654	6 879	8 895	12 834	1 723	83 897
September	33 304	20 808	6 442	9 115	11 664	1 696	83 782

(a) For more information refer to paragraphs 4 to 6 of the Explanatory Notes.

## RED MEAT PRODUCED(a), Lamb: All Series

	<i>New South Wales</i>	<i>Victoria</i>	<i>Queensland</i>	<i>South Australia</i>	<i>Western Australia</i>	<i>Tasmania</i>	<i>Australia</i>
<i>Quarter</i>	<i>tonnes</i>	<i>tonnes</i>	<i>tonnes</i>	<i>tonnes</i>	<i>tonnes</i>	<i>tonnes</i>	<i>tonnes</i>
ORIGINAL							
<b>2000</b>							
June	21 958	36 314	4 640	18 757	11 551	2 215	95 435
September	23 075	38 694	5 335	15 785	8 929	2 201	94 018
December	19 332	41 226	4 543	15 689	9 864	1 992	92 647
<b>2001</b>							
March	20 013	38 980	4 674	14 968	9 745	1 971	90 351
June	20 488	36 640	5 053	15 451	8 533	1 850	88 014
September	21 724	31 845	4 852	11 694	7 745	2 355	80 216
SEASONALLY ADJUSTED							
<b>2000</b>							
June	21 948	38 718	4 790	17 057	11 504	2 018	98 751
September	21 709	38 266	4 897	16 888	9 110	2 394	92 126
December	19 408	38 928	4 853	16 144	8 832	2 293	89 720
<b>2001</b>							
March	21 303	39 285	4 714	15 086	10 825	1 769	92 198
June	20 443	39 129	5 214	14 031	8 508	1 687	91 040
September	20 432	31 383	4 454	12 480	7 932	2 557	78 417
TREND ESTIMATES							
<b>2000</b>							
June	21 009	37 472	4 797	16 330	10 667	2 278	89 626
September	21 153	38 676	4 862	16 917	9 906	2 268	91 198
December	20 793	39 516	4 877	16 289	9 539	2 095	92 107
<b>2001</b>							
March	20 501	38 899	4 891	15 074	9 417	1 947	90 903
June	20 564	36 993	4 844	13 891	9 015	1 962	87 637
September	20 628	34 573	4 739	12 948	8 331	2 159	83 795

(a) For more information refer to paragraphs 4 to 6 of the Explanatory Notes.

## RED MEAT PRODUCED(a), Pig Meat: All Series

	<i>New South Wales</i>	<i>Victoria</i>	<i>Queensland</i>	<i>South Australia</i>	<i>Western Australia</i>	<i>Tasmania</i>	<b>Australia</b>
<i>Quarter</i>	<i>tonnes</i>	<i>tonnes</i>	<i>tonnes</i>	<i>tonnes</i>	<i>tonnes</i>	<i>tonnes</i>	<i>tonnes</i>
ORIGINAL							
<b>2000</b>							
June	28 855	25 673	22 083	8 884	9 322	1 110	95 985
September	31 771	20 999	19 929	8 227	8 771	927	90 708
December	30 568	19 667	21 469	8 143	8 786	837	89 541
<b>2001</b>							
March	31 924	18 734	16 892	9 785	9 074	837	87 319
June	36 107	19 554	19 926	10 524	10 150	982	97 315
September	37 121	19 661	20 540	10 274	9 848	844	98 367
SEASONALLY ADJUSTED							
<b>2000</b>							
June	28 119	24 161	20 665	8 246	8 741	1 004	90 567
September	31 567	20 541	19 957	8 134	8 502	908	89 560
December	30 121	20 028	22 106	8 883	9 362	889	91 212
<b>2001</b>							
March	33 520	19 991	17 579	9 827	9 295	898	92 303
June	35 156	18 401	18 607	9 771	9 529	886	91 828
September	36 917	19 379	20 599	10 188	9 783	826	97 165
TREND ESTIMATES							
<b>2000</b>							
June	28 484	24 151	20 503	8 236	8 195	993	91 052
September	30 159	21 552	20 764	8 398	8 719	935	90 568
December	31 533	19 904	21 891	8 911	9 164	895	90 574
<b>2001</b>							
March	33 139	19 435	17 399	9 504	9 358	887	91 855
June	35 025	19 147	18 910	9 930	9 571	872	93 548
September	36 935	18 893	20 105	10 154	9 702	850	95 433

(a) For more information refer to paragraphs 4 to 6 of the Explanatory Notes.

## TOTAL RED MEAT PRODUCED(a): All Series

	<i>New South Wales</i>	<i>Victoria</i>	<i>Queensland</i>	<i>South Australia</i>	<i>Western Australia</i>	<i>Tasmania</i>	<i>Australia</i>
<i>Quarter</i>	<i>tonnes</i>	<i>tonnes</i>	<i>tonnes</i>	<i>tonnes</i>	<i>tonnes</i>	<i>tonnes</i>	<i>tonnes</i>
ORIGINAL							
<b>2000</b>							
June	189 674	168 917	286 545	54 303	57 112	21 728	<b>780 103</b>
September	194 712	166 832	303 838	50 206	58 806	14 031	<b>790 965</b>
December	188 574	174 743	277 271	55 698	70 310	16 869	<b>783 832</b>
<b>2001</b>							
March	199 518	175 413	249 852	58 074	59 065	20 746	<b>763 045</b>
June	203 421	159 234	306 891	53 535	51 512	16 950	<b>791 911</b>
September	194 797	152 180	319 283	46 604	52 098	13 516	<b>778 861</b>
SEASONALLY ADJUSTED							
<b>2000</b>							
June	190 088	176 077	270 978	53 733	62 968	19 628	<b>777 248</b>
September	196 161	173 146	277 300	56 441	63 119	17 219	<b>785 467</b>
December	188 546	167 437	291 877	53 567	61 696	17 596	<b>780 742</b>
<b>2001</b>							
March	197 840	169 043	278 881	54 945	58 360	18 555	<b>774 874</b>
June	203 932	166 978	290 524	53 738	56 438	15 250	<b>789 114</b>
September	196 072	158 273	291 447	51 929	55 763	16 475	<b>774 472</b>
TREND ESTIMATES							
<b>2000</b>							
June	190 559	173 837	272 660	53 393	62 468	19 162	<b>770 693</b>
September	191 959	172 548	278 898	55 219	62 818	18 255	<b>778 886</b>
December	194 120	170 344	285 843	55 106	61 315	17 608	<b>781 913</b>
<b>2001</b>							
March	196 942	167 733	284 384	54 291	58 857	17 212	<b>781 291</b>
June	199 305	164 827	287 971	53 434	56 816	16 622	<b>780 400</b>
September	200 653	161 935	290 855	52 823	55 536	15 992	<b>780 297</b>

(a) For more information refer to paragraphs 4 to 6 of the Explanatory Notes.

## CHICKEN MEAT PRODUCED(a): All Series

	<i>New South Wales</i>	<i>Victoria</i>	<i>Queensland</i>	<i>South Australia</i>	<i>Western Australia</i>	<i>Australia</i>
<i>Quarter</i>	<i>tonnes</i>	<i>tonnes</i>	<i>tonnes</i>	<i>tonnes</i>	<i>tonnes</i>	<i>tonnes</i>
ORIGINAL						
<b>2000</b>						
June	56 862	43 838	23 529	n.p.	n.p.	152 123
September	57 150	42 735	23 628	n.p.	n.p.	152 454
December	62 506	46 915	24 700	n.p.	n.p.	161 639
<b>2001</b>						
March	60 610	42 335	22 984	n.p.	n.p.	150 536
June	64 036	43 788	22 552	n.p.	n.p.	154 777
September	65 818	41 170	22 490	n.p.	n.p.	155 971
SEASONALLY ADJUSTED						
<b>2000</b>						
June	57 395	44 537	23 808	n.p.	n.p.	154 045
September	58 155	43 657	24 106	n.p.	n.p.	154 833
December	61 298	45 098	23 775	n.p.	n.p.	157 495
<b>2001</b>						
March	60 577	42 469	23 152	n.p.	n.p.	150 767
June	64 682	44 517	22 826	n.p.	n.p.	156 803
September	67 171	42 037	22 964	n.p.	n.p.	158 819
TREND ESTIMATES						
<b>2000</b>						
June	57 789	43 949	23 848	n.p.	n.p.	153 997
September	58 787	44 219	23 876	n.p.	n.p.	155 040
December	60 021	44 168	23 707	n.p.	n.p.	154 830
<b>2001</b>						
March	61 996	43 762	23 277	n.p.	n.p.	154 634
June	64 279	43 292	22 960	n.p.	n.p.	155 741
September	66 496	42 656	22 798	n.p.	n.p.	157 545

(a) For more information refer to paragraphs 8 and 9 of the Explanatory Notes.



## MEAT PRODUCED(a): Original

<i>Financial year</i>	<i>New South Wales</i> tonnes	<i>Victoria</i> tonnes	<i>Queensland</i> tonnes	<i>South Australia</i> tonnes	<i>Western Australia</i> tonnes	<i>Tasmania</i> tonnes	<i>Australia</i> tonnes
<b>BEEF</b>							
<b>1998-1999</b>	437 769	398 815	904 430	62 266	104 979	53 271	<b>1 972 736</b>
<b>1999-2000</b>	431 983	351 273	932 053	78 001	94 973	57 557	<b>1 952 321</b>
<b>2000-2001</b>	431 898	347 920	1 005 963	82 533	100 524	48 771	<b>2 020 911</b>
<b>VEAL</b>							
<b>1998-1999</b>	15 630	14 225	5 604	607	436	1 241	<b>37 792</b>
<b>1999-2000</b>	13 044	13 370	6 550	471	859	1 236	<b>35 581</b>
<b>2000-2001</b>	14 214	11 842	5 682	307	382	996	<b>33 472</b>
<b>MUTTON</b>							
<b>1998-1999</b>	117 416	61 646	26 042	48 029	54 451	8 724	<b>316 307</b>
<b>1999-2000</b>	118 947	76 719	27 704	28 969	69 077	11 796	<b>333 212</b>
<b>2000-2001</b>	126 835	81 965	28 386	36 103	64 936	7 232	<b>345 457</b>
<b>LAMB</b>							
<b>1998-1999</b>	77 138	128 380	14 134	44 172	39 021	9 222	<b>312 068</b>
<b>1999-2000</b>	80 016	140 215	17 456	56 667	44 136	8 833	<b>347 323</b>
<b>2000-2001</b>	82 908	155 540	19 605	61 893	37 070	8 014	<b>365 030</b>
<b>PIG MEAT</b>							
<b>1998-1999</b>	97 185	114 582	84 053	30 864	37 534	5 242	<b>369 851</b>
<b>1999-2000</b>	103 234	106 690	82 037	31 927	34 201	4 403	<b>362 855</b>
<b>2000-2001</b>	130 371	78 954	78 216	36 679	36 781	3 583	<b>364 883</b>
<b>TOTAL RED MEAT</b>							
<b>1998-1999</b>	745 138	717 648	1 034 263	185 938	236 421	77 700	<b>3 008 753</b>
<b>1999-2000</b>	747 224	688 266	1 065 801	196 036	243 247	83 825	<b>3 031 291</b>
<b>2000-2001</b>	786 225	676 222	1 137 852	217 514	239 693	68 596	<b>3 129 753</b>
<b>CHICKEN MEAT</b>							
<b>1998-1999</b>	223 222	153 601	88 086	n.p.	n.p.	n.p.	<b>564 270</b>
<b>1999-2000</b>	221 245	170 123	95 387	n.p.	n.p.	n.p.	<b>597 680</b>
<b>2000-2001</b>	244 302	175 773	93 863	n.p.	n.p.	n.p.	<b>619 406</b>

(a) For more information refer to paragraphs 4 to 9 of the Explanatory Notes.

## EXPORTS OF FRESH, FROZEN AND PROCESSED MEAT, Australia(a): Original

Period	FRESH, CHILLED OR FROZEN MEAT.....									PROCESSED MEAT	
	<i>Beef bone -in</i>	<i>Beef bone -out</i>	<i>Veal bone -in</i>	<i>Veal bone -out</i>	<i>Mutton bone -in</i>	<i>Mutton bone -out</i>	<i>Lamb bone -in</i>	<i>Lamb bone -out</i>	<i>Pork</i>	<i>Bacon and ham</i>	<i>Canned meat</i>
	tonnes	tonnes	tonnes	tonnes	tonnes	tonnes	tonnes	tonnes	tonnes	tonnes	tonnes
<b>1998-1999</b>	61 019	836 576	1 614	6 143	114 745	51 398	71 576	9 334	16 510	168	13 056
<b>1999-2000</b>	45 508	818 667	1 555	7 395	120 946	55 499	86 551	11 064	39 227	88	13 867
<b>2000-2001</b>	42 000	940 311	2 078	6 438	127 837	63 760	103 650	12 328	43 929	280	14 870
<b>2000</b>											
June	11 673	215 621	294	1 353	31 252	12 665	25 528	3 159	9 957	11	4 076
September	12 143	229 812	605	2 679	24 961	16 069	26 687	2 958	10 231	76	3 679
December	13 964	249 817	502	1 962	34 515	19 391	29 031	3 230	10 043	67	3 537
<b>2001</b>											
March	8 498	207 854	370	561	35 284	14 852	23 211	2 906	10 539	67	3 558
June	7 395	252 829	601	1 236	33 078	13 448	24 721	3 235	13 115	70	4 096
September	7 005	253 875	578	3 259	25 978	12 869	22 254	2 905	14 864	14	4 120

(a) For more information refer to paragraphs 10 and 11 of the Explanatory Notes.

## EXPORTS OF LIVE SHEEP AND CATTLE, Australia(a): Original

	<i>Number</i>	<i>Gross weight</i>	<i>Gross value</i>	<i>Unit value</i>
<i>Period</i>	<i>'000</i>	<i>'000 tonnes</i>	<i>\$'000</i>	<i>\$</i>
SHEEP				
<b>1998-1999</b>	4 958.7	254.9	181 671	36.64
<b>1999-2000</b>	4 858.6	243.3	180 345	37.12
<b>2000-2001</b>	5 936.0	283.6	257 661	43.41
<b>2000</b>				
June	1 077.2	53.3	40 223	37.34
September	1 241.4	60.7	48 598	39.15
December	1 657.2	77.9	67 080	40.48
<b>2001</b>				
March	1 726.6	82.0	77 523	44.90
June	1 310.7	63.1	64 460	49.18
September	1 669.4	78.2	93 487	56.00
CATTLE				
<b>1998-1999</b>	713.0	264.7	342 667	480.57
<b>1999-2000</b>	845.7	317.1	432 645	511.60
<b>2000-2001</b>	845.8	314.3	481 931	569.78
<b>2000</b>				
June	191.4	70.0	100 376	524.36
September	238.9	84.6	115 548	483.76
December	251.6	94.5	145 817	579.49
<b>2001</b>				
March	184.9	71.3	115 546	624.93
June	170.4	63.8	105 020	616.20
September	233.8	83.3	143 378	613.15

(a) For more information refer to paragraph 12 of the Explanatory Notes.

## WHOLE MILK INTAKE, By Factories(a): All Series

	<i>New South Wales(b)</i>	<i>Victoria</i>	<i>Queensland</i>	<i>South Australia</i>	<i>Western Australia</i>	<i>Tasmania</i>	<i>Australia(c)</i>
<i>Quarter</i>	<i>ML</i>	<i>ML</i>	<i>ML</i>	<i>ML</i>	<i>ML</i>	<i>ML</i>	<i>ML</i>
ORIGINAL							
<b>2000</b>							
March	340	1 697	209	172	98	166	2 682
June	320	1 031	188	158	101	85	1 883
September	353	1 669	204	173	110	101	2 610
December	385	2 465	204	207	105	228	3 594
<b>2001</b>							
March	300	1 553	183	161	90	156	2 443
June	291	1 090	170	157	89	105	1 902
SEASONALLY ADJUSTED							
<b>2000</b>							
March	351	1 742	212	186	105	152	2 748
June	358	1 778	207	184	104	144	2 775
September	350	1 767	198	173	102	154	2 744
December	340	1 643	187	171	103	137	2 581
<b>2001</b>							
March	315	1 594	190	175	96	143	2 513
June	326	1 872	187	182	92	177	2 836
TREND ESTIMATES							
<b>2000</b>							
March	352	1 741	213	183	104	150	2 743
June	354	1 766	206	181	104	149	2 760
September	350	1 721	197	176	103	144	2 691
December	341	1 675	191	173	100	144	2 624
<b>2001</b>							
March	332	1 689	188	175	97	151	2 632
June	325	1 751	187	179	93	161	2 696

(a) For more information refer to paragraph 13 of the Explanatory Notes.

(b) New South Wales total includes Australian Capital Territory.

(c) Australian total excludes Northern Territory.

Source: Original series data from Australian Dairy Corporation.

## MARKET MILK SALES, By Factories(a): All Series

	<i>New South Wales</i>	<i>Victoria</i>	<i>Queensland</i>	<i>South Australia</i>	<i>Western Australia</i>	<i>Tasmania</i>	<i>Australia(b)</i>
<i>Quarter</i>	<i>ML</i>	<i>ML</i>	<i>ML</i>	<i>ML</i>	<i>ML</i>	<i>ML</i>	<i>ML</i>
ORIGINAL							
<b>2000</b>							
March	139	107	94	46	47	12	444
June	140	110	95	44	48	12	448
September	152	115	99	51	49	13	479
December	150	112	99	49	48	12	470
<b>2001</b>							
March	144	113	96	49	47	12	462
June	141	117	99	51	49	12	468
SEASONALLY ADJUSTED							
<b>2000</b>							
March	142	110	94	46	48	12	452
June	139	108	95	45	48	12	446
September	149	114	97	50	49	13	472
December	150	112	100	48	48	12	469
<b>2001</b>							
March	148	117	97	50	47	13	472
June	140	115	100	51	48	12	466
TREND ESTIMATES							
<b>2000</b>							
March	141	110	95	46	48	12	452
June	143	110	95	47	48	12	455
September	147	111	97	48	48	12	464
December	149	114	98	49	48	13	470
<b>2001</b>							
March	147	115	99	50	48	12	470
June	143	115	99	50	47	12	468

(a) For more information refer to paragraph 13 of the Explanatory Notes.

(b) Australian total excludes Australian Capital Territory, Northern Territory and interstate transfer of UHT milk.

Source: Original series data from Australian Dairy Corporation.

## BROKERS AND DEALERS RECEIVALS OF TAXABLE WOOL(a): All Series

Quarter	New South Wales	Victoria	Queensland	South Australia	Western Australia	Tasmania	Australia	% of total received by brokers
	tonnes	tonnes	tonnes	tonnes	tonnes	tonnes	tonnes	%
ORIGINAL								
<b>2000</b>								
June	39 703	29 196	12 678	20 803	31 340	3 312	<b>137 032</b>	75.8
September	55 071	38 369	13 679	25 616	33 409	3 706	<b>169 850</b>	85.8
December	51 624	53 391	6 689	26 382	31 788	4 517	<b>174 391</b>	80.7
<b>2001</b>								
March	41 236	32 811	8 243	20 375	33 581	1 859	<b>138 105</b>	82.3
June	36 870	23 763	12 112	17 366	16 697	2 627	<b>109 435</b>	79.8
September	52 513	36 436	10 740	22 733	26 702	2 322	<b>151 446</b>	82.6
SEASONALLY ADJUSTED								
<b>2000</b>								
June	50 234	45 086	10 820	27 897	48 408	4 214	<b>186 660</b>	..
September	46 651	35 776	10 544	21 300	29 941	3 356	<b>147 570</b>	..
December	44 338	35 265	9 931	21 605	28 719	3 137	<b>142 997</b>	..
<b>2001</b>								
March	47 476	42 292	9 647	24 362	29 611	2 509	<b>155 897</b>	..
June	46 541	37 405	10 301	23 502	25 845	3 354	<b>146 948</b>	..
September	44 727	34 038	8 310	18 906	24 129	2 177	<b>132 286</b>	..
TREND ESTIMATES								
<b>2000</b>								
June	47 587	37 692	10 742	22 348	32 802	4 039	<b>155 209</b>	..
September	46 795	37 358	10 431	22 215	31 168	3 309	<b>151 277</b>	..
December	46 372	37 827	10 127	22 641	29 475	3 105	<b>149 548</b>	..
<b>2001</b>								
March	46 079	38 422	9 883	23 041	28 021	2 906	<b>148 351</b>	..
June	46 155	37 827	9 508	22 435	26 440	2 754	<b>145 118</b>	..
September	45 760	36 014	9 039	21 037	24 823	2 615	<b>139 287</b>	..

(a) For more information refer to paragraphs 14 and 15 of the Explanatory Notes.

## LIVESTOCK PRODUCTS(a): Original

Financial year	New South Wales	Victoria	Queensland	South Australia	Western Australia	Tasmania	Australia
----------------	-----------------	----------	------------	-----------------	-------------------	----------	-----------

## WHOLE MILK INTAKE BY FACTORIES (ML)(b)

<b>1998-1999</b>	1 286	6 414	827	643	403	603	<b>10 175</b>
<b>1999-2000</b>	1 395	6 870	848	714	412	609	<b>10 847</b>
<b>2000-2001</b>	1 330	6 777	760	699	394	590	<b>10 549</b>

## MARKET MILK SALES BY FACTORIES (ML)(c)

<b>1998-1999</b>	578	442	382	185	191	48	<b>1 827</b>
<b>1999-2000</b>	566	440	383	185	190	48	<b>1 811</b>
<b>2000-2001</b>	587	457	393	199	192	50	<b>1 878</b>

## BROKERS AND DEALERS RECEIVALS OF TAXABLE WOOL (Tonnes)

<b>1998-1999</b>	181 712	153 981	51 873	89 450	145 515	16 232	<b>638 763</b>
<b>1999-2000</b>	190 398	152 890	45 661	91 795	143 445	17 331	<b>641 520</b>
<b>2000-2001</b>	184 801	148 333	40 723	89 739	115 475	12 709	<b>591 781</b>

(a) For more information refer to paragraph 13 to 15 of the Explanatory Notes.

(b) New South Wales total includes Australian Capital Territory. Australian total excludes Northern Territory.

(c) Australian total excludes Australian Capital Territory, Northern Territory and interstate transfer of UHT milk.

Source: Original series data from Australian Dairy Corporation.

# WHAT IF...? REVISIONS TO TREND ESTIMATES

## EFFECT OF NEW SEASONALLY ADJUSTED ESTIMATES ON TREND ESTIMATES

Each time new seasonally adjusted estimates become available, trend estimates are revised (see paragraphs 20 and 21 of the Explanatory Notes).

### TREND REVISIONS

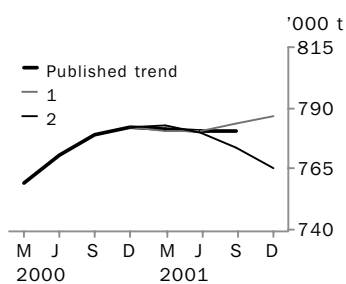
The graphs and tables which follow present the effect of two possible new seasonally adjusted estimates on the previous trend estimates:

**1** The December Quarter 2001 seasonally adjusted estimate is higher than the September Quarter 2001 estimate by the percentage shown.

**2** The December Quarter 2001 seasonally adjusted estimate is lower than the September Quarter 2001 estimate by the percentage shown.

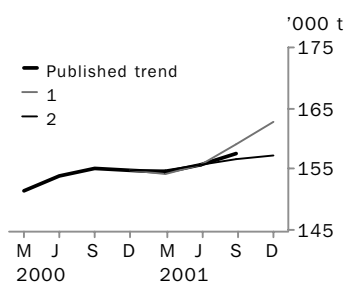
These percentages were chosen because they represent the average absolute quarterly percentage change for these series over the last ten years.

### RED MEAT PRODUCTION



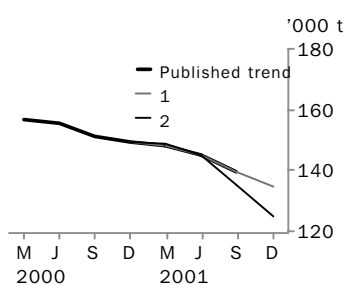
	TREND AS PUBLISHED		WHAT IF NEXT QUARTER'S SEASONALLY ADJUSTED ESTIMATE:					
	number	% change	<b>1</b> rises by 3% on Sep Qtr 2001	number	% change	<b>2</b> falls by 3% on Sep Qtr 2001	number	% change
Sep Qtr 2000	778 886	1.1	778 887	1.1	778 887	1.1	778 887	1.1
Dec Qtr 2000	781 913	0.4	781 911	0.4	781 911	0.4	781 911	0.4
Mar Qtr 2001	781 291	-0.1	780 764	-0.1	782 766	0.1	782 766	0.1
Jun Qtr 2001	780 400	-0.1	780 736	0.0	779 966	-0.4	779 966	-0.4
Sep Qtr 2001	780 297	0.0	783 329	0.3	773 653	-0.8	773 653	-0.8
Dec Qtr 2001	—	—	786 393	0.4	764 906	-1.1	764 906	-1.1

### CHICKEN MEAT PRODUCTION



	TREND AS PUBLISHED		WHAT IF NEXT QUARTER'S SEASONALLY ADJUSTED ESTIMATE:					
	number	% change	<b>1</b> rises by 4% on Sep Qtr 2001	number	% change	<b>2</b> falls by 4% on Sep Qtr 2001	number	% change
Sep Qtr 2000	155 040	0.7	155 040	0.7	155 040	0.7	155 040	0.7
Dec Qtr 2000	154 830	-0.1	154 828	-0.1	154 828	-0.1	154 828	-0.1
Mar Qtr 2001	154 634	-0.1	154 320	-0.3	154 805	0.0	154 805	0.0
Jun Qtr 2001	155 741	0.7	155 843	1.0	155 674	0.6	155 674	0.6
Sep Qtr 2001	157 545	1.2	158 938	2.0	156 605	0.6	156 605	0.6
Dec Qtr 2001	—	—	162 808	2.4	157 274	0.4	157 274	0.4

### WOOL RECEIVALS



	TREND AS PUBLISHED		WHAT IF NEXT QUARTER'S SEASONALLY ADJUSTED ESTIMATE:					
	number	% change	<b>1</b> rises by 9% on Sep Qtr 2001	number	% change	<b>2</b> falls by 9% on Sep Qtr 2001	number	% change
Sep Qtr 2000	151 277	-2.5	151 299	-2.5	151 299	-2.5	151 299	-2.5
Dec Qtr 2000	149 548	-1.1	149 548	-1.2	149 548	-1.2	149 548	-1.2
Mar Qtr 2001	148 351	-0.8	148 141	-0.9	149 012	-0.4	149 012	-0.4
Jun Qtr 2001	145 118	-2.2	145 179	-2.0	144 862	-2.8	144 862	-2.8
Sep Qtr 2001	139 287	-4.0	139 685	-3.8	135 490	-6.5	135 490	-6.5
Dec Qtr 2001	—	—	134 685	-3.6	125 036	-7.7	125 036	-7.7



# WHAT IF...? REVISIONS TO TREND ESTIMATES

## EFFECT OF NEW SEASONALLY ADJUSTED ESTIMATES ON TREND ESTIMATES

Readers should exercise care when interpreting trend estimates. The last three trend estimates, in particular, are likely to be revised when new seasonally adjusted estimates become available.

### TREND REVISIONS

The graph and tables which follow present the effect of two possible scenarios on the previous trend estimates:

**1** The September Quarter 2001 seasonally adjusted estimate is higher than the June Quarter 2001 estimate by:

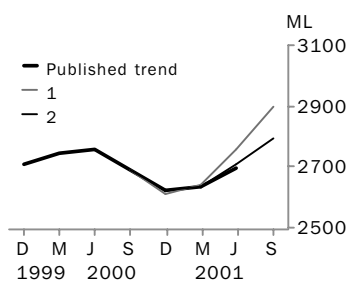
- +2% for whole milk intake by factories.

**2** The September Quarter 2001 seasonally adjusted estimate is lower than the June Quarter 2001 estimate by:

- 2% for whole milk intake by factories.

These percentages were chosen because they represent the average absolute quarterly percentage change for these series over the last ten years.

### WHOLE MILK INTAKE BY FACTORIES



	TREND AS PUBLISHED		WHAT IF NEXT QUARTER'S SEASONALLY ADJUSTED ESTIMATE:			
	number	% change	<b>1</b> <i>rises by 2% on Jun Qtr 2001</i>	% change	<b>2</b> <i>falls by 2% on Jun Qtr 2001</i>	% change
Jun Qtr 2000	2 760	0.6	2 761	0.7	2 761	0.7
Sep Qtr 2000	2 691	-2.5	2 691	-2.5	2 691	-2.5
Dec Qtr 2000	2 624	-2.5	2 610	-3.0	2 620	-2.6
Mar Qtr 2001	2 632	0.3	2 638	1.1	2 635	0.6
Jun Qtr 2001	2 696	2.4	2 757	4.5	2 710	2.8
Sep Qtr 2001	—	—	2 895	5.0	2 791	3.0

## EXPLANATORY NOTES

### INTRODUCTION

- 1** This publication contains information on livestock slaughterings, meat production, exports of live sheep and live cattle, exports of fresh, frozen and processed meat, and whole milk intake by factories, market milk sales by factories and receivals of taxable wool by wool brokers and dealers.
- 2** The figures shown in this publication have been revised where necessary and as a consequence may not agree with similar data shown in previous publications.
- 3** Where figures have been rounded, discrepancies may occur between sums of the component items and totals.
- 4** Unless indicated otherwise, Australian totals include data for all States and both Territories.

### LIVESTOCK SLAUGHTERINGS AND MEAT PRODUCTION

- 5** The statistics on slaughterings for red meat production are based on a monthly collection from abattoirs and other major slaughtering establishments and include estimates of animals slaughtered on farms and by country butchers and other small slaughtering establishments.
- 6** Red meat is shown in carcass weight and excludes offal.
- 7** Care should be taken when using this information as the figures only relate to slaughterings for human consumption and do not include animals condemned, slaughtered for pet food or those killed for boiling down.
- 8** Poultry slaughterings and meat produced statistics have been compiled from returns supplied by commercial poultry slaughtering establishments and comprise boilers, fryers and roasters. Many small producers are excluded from the collection; however, the statistics represent a high level of coverage. Tasmanian and Northern Territory data are excluded from the Australian total.
- 9** Chicken meat is shown in dressed weight of whole birds, pieces and giblets. Some slaughterings and meat production statistics for 'Ducks and Drakes' and 'Other Fowls and Turkeys' are available by contacting the ABS on Hobart 03 6222 5974 or by writing to GPO Box 66a, Hobart Tasmania 7001 (Attention: Agriculture Section).

### EXPORTS OF FRESH, FROZEN AND PROCESSED MEAT

- 10** Table 20 shows exports of fresh, frozen and processed meat, excluding offal. International trade statistics are compiled by the ABS from information transmitted by exporters and importers or their agents to the Australian Customs Service. Factors can be applied to beef, veal, mutton and lamb bone-out figures to derive bone-in carcass weight which, when added to bone-in figures, shows total exports in carcass weight. The factor for beef and veal is 1.5 and for mutton and lamb it is 2.0. This information is sourced from Department of Agriculture, Fisheries and Forestry–Australia.
- 11** Beef also includes buffalo meat. Bacon and ham shown is the cured carcass weight of smoked or cooked bacon and ham. It also includes the stated net weight of packs of canned bacon and ham. Canned meat is shown as the canned weight and excludes canned bacon and ham.

### LIVE SHEEP AND CATTLE EXPORTS

- 12** Table 21 contains statistics of the number of live sheep and cattle exported, the gross weight, gross value and unit value. The unit value is obtained by dividing the gross value by the number of animals exported. Sheep and cattle exported for breeding are excluded.

## EXPLANATORY NOTES

### MILK

**13** Tables 2, 22, 23 and 25 contain statistics collected by the Australian Dairy Corporation (ADC). Whole milk intake by factories includes the whole milk equivalent of farm cream intake. Market milk sales includes white, flavoured, high and low fat milk and UHT milk.

### WOOL RECEIVALS

**14** The statistics in tables 2, 24 and 25 show the amount of taxable wool received by brokers and purchased by dealers from wool producers. It excludes wool received by brokers on which tax has already been paid by other dealers (private buyers) or brokers.

**15** The information shown is on the basis of the State in which wool has actually been received and does not necessarily reflect the production of wool in that State.

### SEASONAL ADJUSTMENT

**16** Seasonal adjustment is a means of removing the estimated effects of normal seasonal variation from the series so that the effects of other influences can be more clearly recognised.

**17** In the seasonal adjustment of the livestock estimates, account has been taken of both normal seasonal factors and 'trading-day' effects, where significant, (arising from the varying length of each quarter and the varying numbers of Sundays, Mondays, Tuesdays etc. in the quarter). Adjustments are also made for the effects of change in the date of Easter holidays, again, where significant. Seasonal adjustment does not remove from the series the effect of irregular influences (e.g. abnormal weather, industrial disputes).

**18** The State component series have been seasonally adjusted independently. Therefore, the adjusted components may not add to the Australian Group totals.

**19** As happens with all seasonally adjusted series, the seasonal factors are reviewed annually to take account of each additional year's data.

### TREND ESTIMATES

**20** A trend estimate is obtained by reducing the irregular component from the seasonally adjusted series. In this publication trend estimates are generally derived by applying a seven term Henderson moving average to the seasonally adjusted series. The seven term Henderson, (like all Henderson averages) is symmetric, but as the end of a time series is approached, asymmetric forms of the average are applied. Unlike the weights of the standard seven term Henderson moving average, the weights employed here have been tailored to suit the particular characteristics of individual series. While the asymmetric weights enable the trend to be calculated for recent quarters, it does result in revisions to the estimates for the most recent three quarters as additional observations become available. Revisions of trend estimates will also occur with revisions to the original data and re-estimation of seasonal factors.

**21** Sensitivity analysis indicates the potential magnitude and direction of revisions created to the last three estimates. It aims to show how a specified movement in the seasonally adjusted data in the next period will affect the trend path of the time series. By showing how sensitive the trend estimates are to the addition of new data, the analysis provides information which can be used in the assessment of the trend's stability.

**22** For further information, see *Information Paper: A Guide to Interpreting Time Series — Monitoring 'Trends', an Overview* (Cat. no. 1348.0) or contact the Assistant Director, Time Series Analysis on Canberra 02 6252 6345.

## EXPLANATORY NOTES

---

### RELATED PUBLICATIONS

**23** Current publications produced by the ABS are listed in the *Catalogue of Publications and Products, Australia* (Cat. no. 1101.0). The ABS also issues, on Tuesdays and Fridays, a *Release Advice* (Cat. no. 1105.0) which lists publications to be released in the next few days. The Catalogue and Release Advice are available from any ABS office.

### GENERAL ACKNOWLEDGMENT

ABS publications draw extensively on information provided freely by individuals, businesses, governments and other organisations. Their continued cooperation is very much appreciated. Without it, the wide range of statistics published by the ABS would not be available. Information received by the ABS is treated in strict confidence as required by the *Census and Statistics Act 1905*.

### SYMBOLS AND OTHER USAGES

billion	thousand million
ML	million litres
n.a.	not available
n.p.	not published
t	tonnes
..	not applicable







## FOR MORE INFORMATION...

- INTERNET* **www.abs.gov.au** the ABS web site is the best place to start for access to summary data from our latest publications, information about the ABS, advice about upcoming releases, our catalogue, and Australia Now—a statistical profile.
- LIBRARY* A range of ABS publications is available from public and tertiary libraries Australia-wide. Contact your nearest library to determine whether it has the ABS statistics you require, or visit our web site for a list of libraries.
- CPI INFOLINE* For current and historical Consumer Price Index data, call 1902 981 074 (call cost 77c per minute).
- DIAL-A-STATISTIC* For the latest figures for National Accounts, Balance of Payments, Labour Force, Average Weekly Earnings, Estimated Resident Population and the Consumer Price Index call 1900 986 400 (call cost 77c per minute).

## INFORMATION SERVICE

Data which have been published and can be provided within five minutes are free of charge. Our information consultants can also help you to access the full range of ABS information—ABS user-pays services can be tailored to your needs, time frame and budget. Publications may be purchased. Specialists are on hand to help you with analytical or methodological advice.

- PHONE* **1300 135 070**
- EMAIL* **client.services@abs.gov.au**
- FAX* 1300 135 211
- POST* Client Services, ABS, GPO Box 796, Sydney 1041

## WHY NOT SUBSCRIBE?

ABS subscription services provide regular, convenient and prompt deliveries of ABS publications and products as they are released. Email delivery of monthly and quarterly publications is available.

- PHONE* 1300 366 323
- EMAIL* subscriptions@abs.gov.au
- FAX* 03 9615 7848
- POST* Subscription Services, ABS, GPO Box 2796Y, Melbourne 3001



272150009017  
ISSN 0728-4047

RRP \$21.00